



4FT ROUNDED ARCHITECTURAL LINEAR STRIP INSTALLATION GUIDE

OVERVIEW

TOOLS REQUIRED (NOT INCLUDED)

- Wiring supplies as per national and local electrical codes
- Hardware/tools required to mount to structure (field provided)

INSTRUCTIONS FOR THE FOLLOWING FIXTURES

Order	Model
R33411	RENO-RALS4-DV-MW-MCCT-WH
R33412	RENO-RALS4-DV-MW-MCCT-BK

IMPORTANT

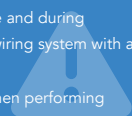
- To avoid the risk of fire, or electric shock this product should be installed, inspected, and maintained by a qualified electrician only. Installation should be completely by an individual familiar with the construction and operation of the luminaire. Installation of luminaire must be in accordance with nation and local building and electrical codes.

NOTES

- Instructions do not cover all details and all possible product configurations.
- Do not restrict luminaire ventilation.
- Ensure LED luminaire is not covered with material that will prevent convection or conduction cooling.
- Ensure LED luminaire has the correct polarity before installation
- Avoid exposing wiring to metal edges and sharp objects.

WARNING & SAFETY

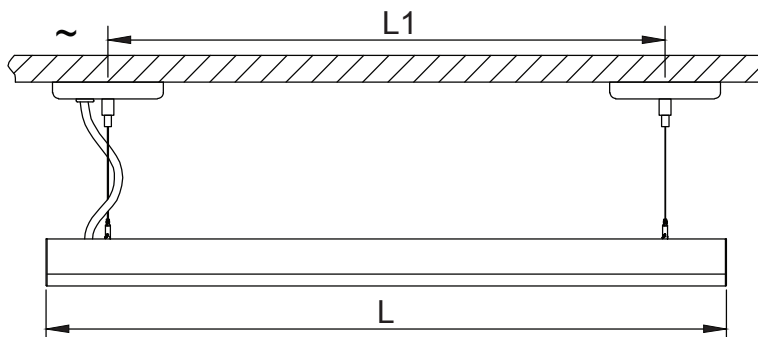
- To avoid electric shock: Be certain electrical power is OFF before and during installation and maintenance. Luminaire must be supplied by a wiring system with an equipment grounding conductor.
- To avoid burning hands: Make sure lens and housing are cool when performing maintenance.
- To avoid product degradation: Make sure the wire supply voltage is the same as the luminaire supply. Use proper supply wiring as specified on the luminaire nameplate. Avoid use in environments containing sulfur, chlorine, or other halides, methyl acetate or ethyl acetate, cyanoacrylates, glycol ethers, formaldehyde or butadiene.



FOR ADDITIONAL INFORMATION REQUIRED NOT COVERED IN THIS DOCUMENT PLEASE CONTACT A LOCAL REPRESENTATIVE!

- Maintenance: Perform visual, electrical, and mechanical inspections on a regular basis. The environment and frequency of use should determine this. However, it is recommended that checks be made at least once a year. Electrically check to make sure that all connections are clean and tight. Mechanically check that all parts are properly assembled.

DIMENSION

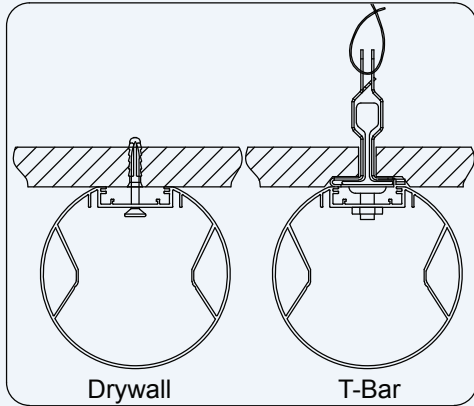


4ft	
L	47.17" 198mm
L1	43.46" 104mm

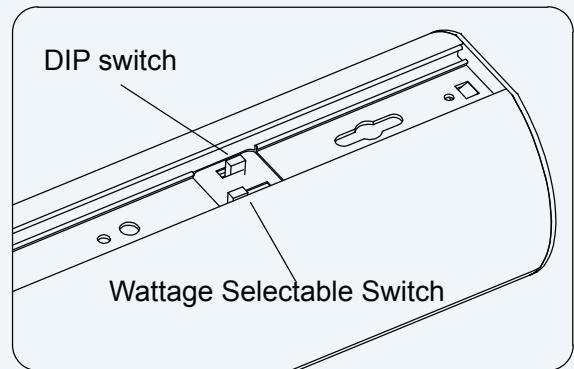
4FT ROUNDED ARCHITECTURAL LINEAR STRIP | INSTALLATION GUIDE

INSTALLATION INSTRUCTIONS

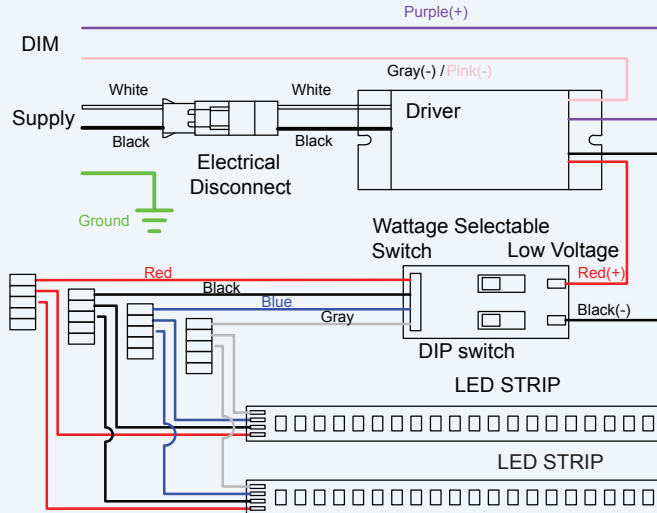
■ Surface mounted



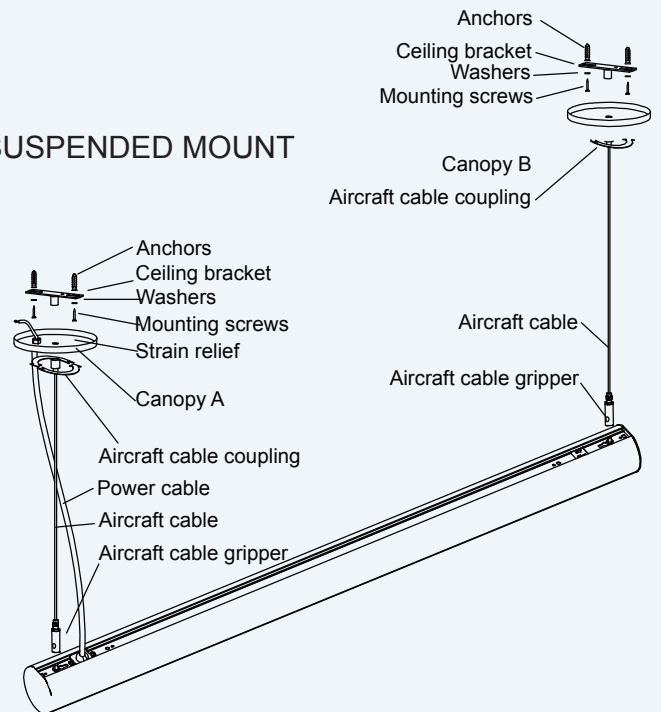
■ Dip switch for CCT& Wattage Selectable Switch



■ Wiring Diagram

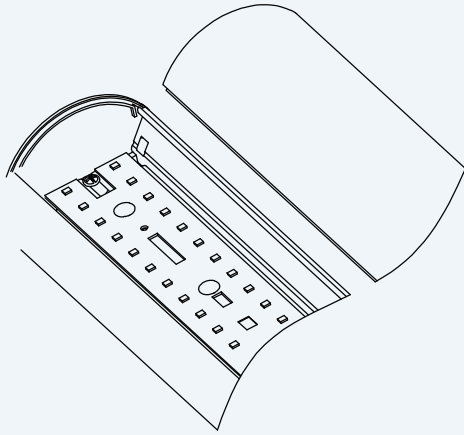


■ SUSPENDED MOUNT

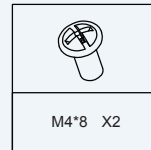


4FT ROUNDED ARCHITECTURAL LINEAR STRIP | INSTALLATION GUIDE

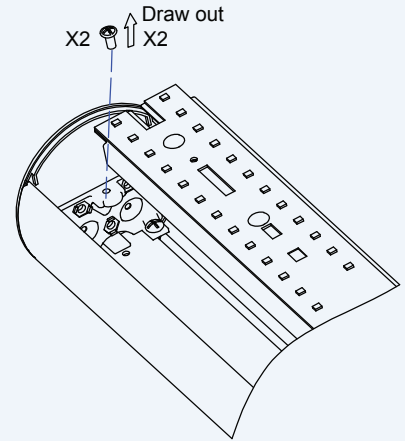
INSTALLATION INSTRUCTIONS



Step 1 : Remove the lens.

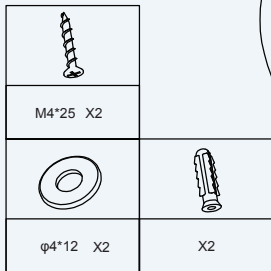


M4*8 X2



Step 2 : Unscrew the screws and remove the reflector

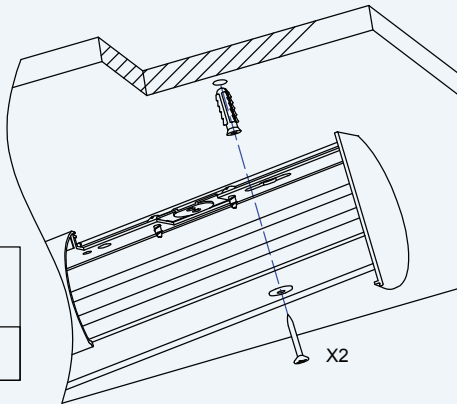
SURFACE MOUNT



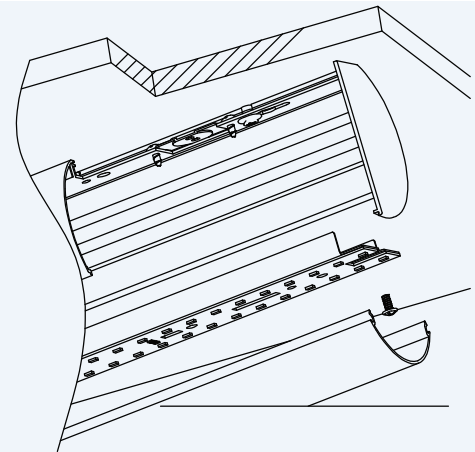
M4*25 X2

φ4*12 X2

X2

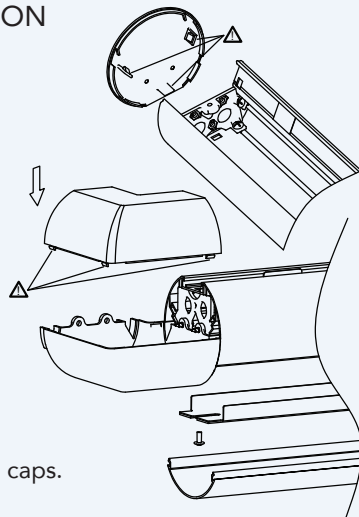


Step 1 : Find the appropriate position on the ceiling, place the washer and then secure the fixture with screws.

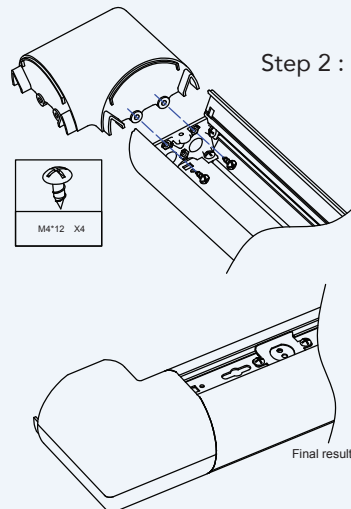


Step 2: Final

CORNER CONNECTION



Step 1 : Remove the end caps.



Step 2 : Secure the corner with screws



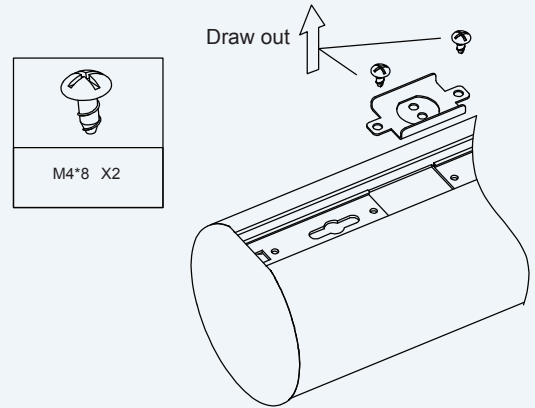
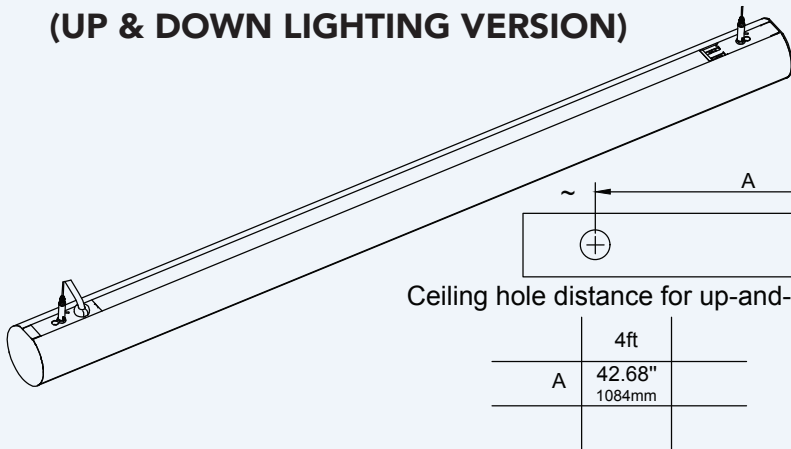
M4*12 X4

Final result.

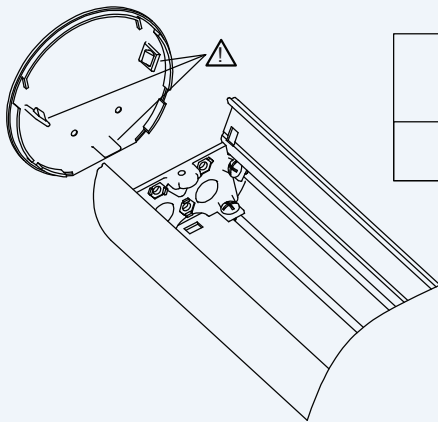
4FT ROUNDED ARCHITECTURAL LINEAR STRIP | INSTALLATION GUIDE

INSTALLATION INSTRUCTIONS

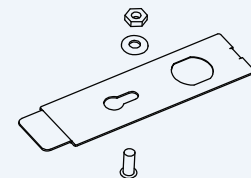
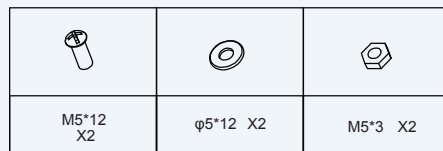
SUSPENDED MOUNT (UP & DOWN LIGHTING VERSION)



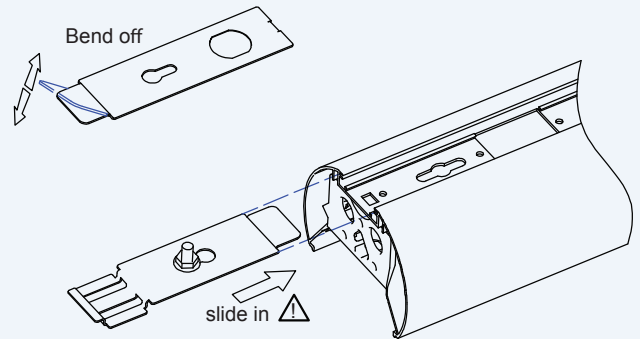
Step 1 : Remove the wiring bracket.



Step 2 : Remove the end cap.



Step 3 : Install the screws.

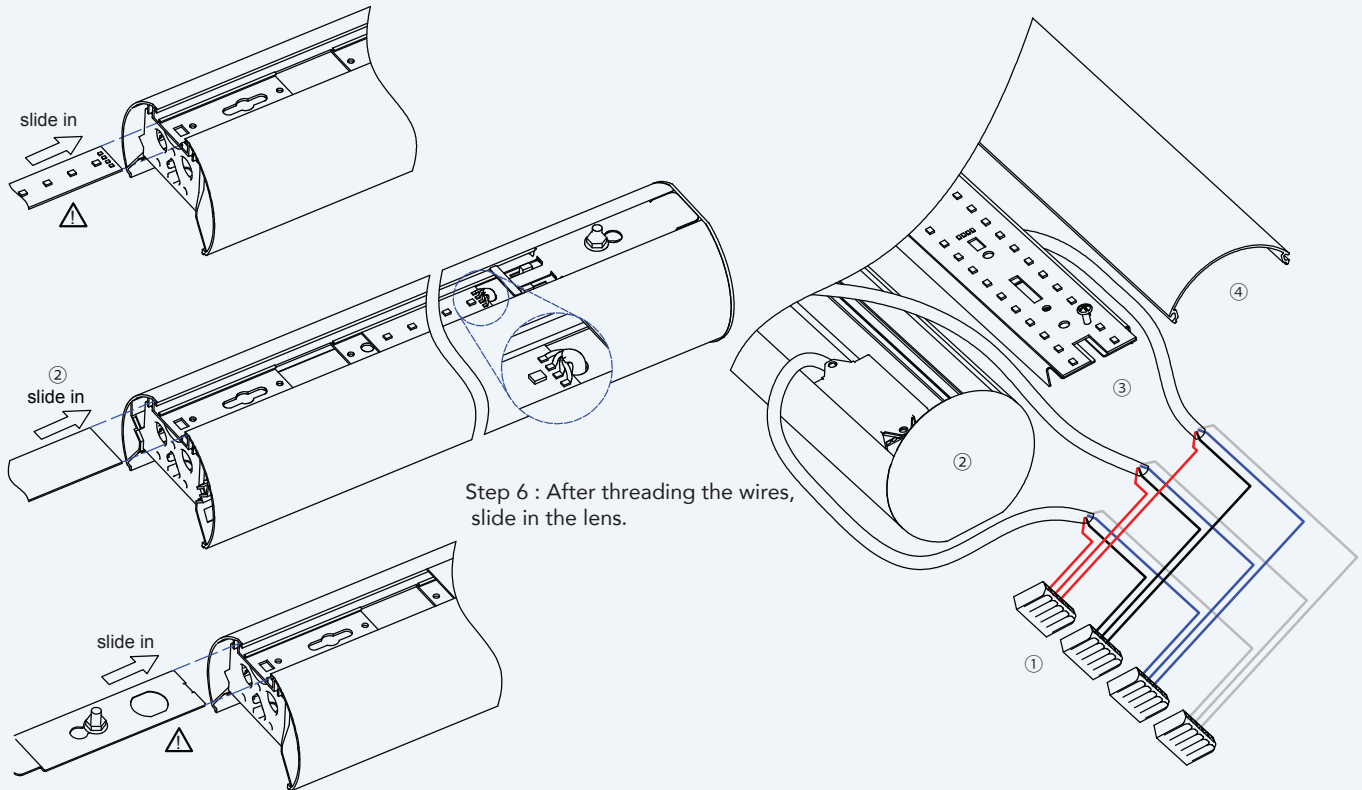


Step 4 : Insert the suspension clip into the fixture as shown in the diagram.

INSTALLATION INSTRUCTIONS

SUSPENDED MOUNT (UP & DOWN LIGHTING VERSION)

Step 5 : Insert the wire-free module end into the fixture.



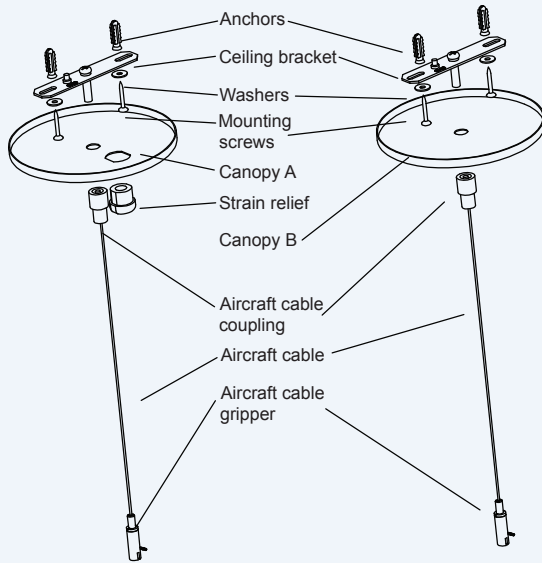
Step 7 : Slide in the suspension clip on the other end in the specified direction.

Step 8 : Connect the wiring, install the end cap, mount the module installation plate, and attach the lens.

4FT ROUNDED ARCHITECTURAL LINEAR STRIP | INSTALLATION GUIDE

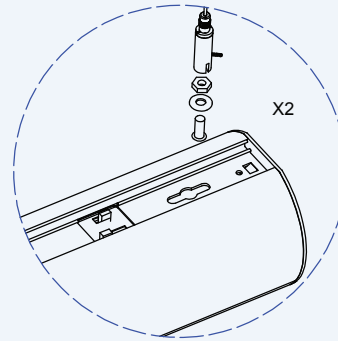
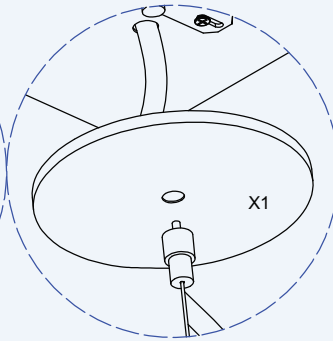
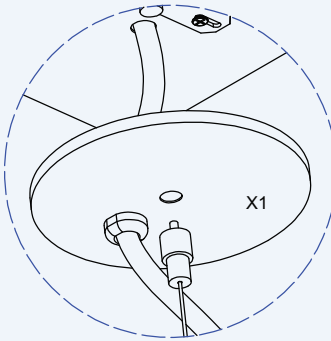
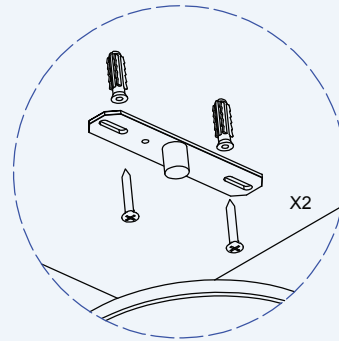
INSTALLATION INSTRUCTIONS

SUSPENDED MOUNT (UP & DOWN LIGHTING VERSION)



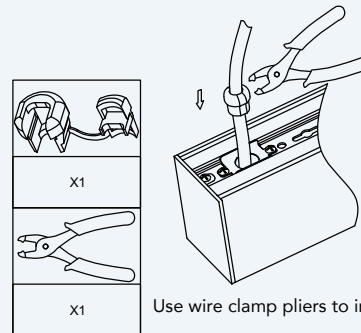
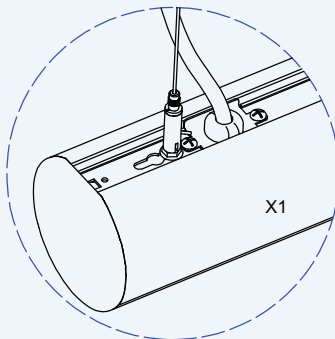
		
M5*12 X2	φ5*12 X2	M5*3 X2

Step 1 : Install the ceiling bracket and connect the ground wire.



Step 2 : Use the strain relief to secure the wire and make the wiring connections, then install the canopy.

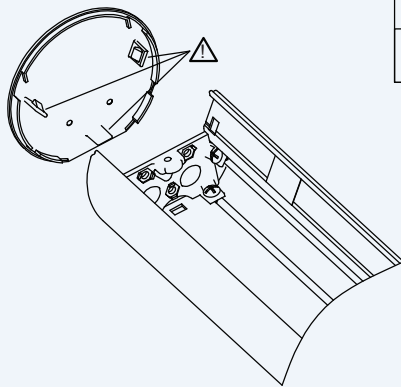
Step 3 : Install the suspension screws as shown in the diagram.



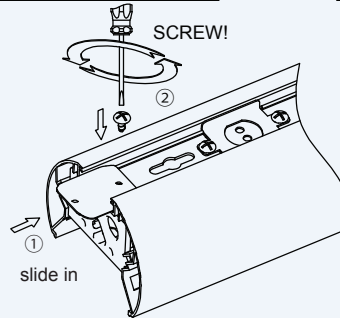
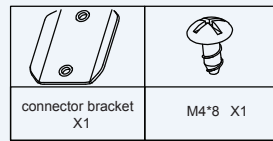
Use wire clamp pliers to install the Strain relief.

Step 4 : Connect the aircraft cable gripper to the suspension screws.

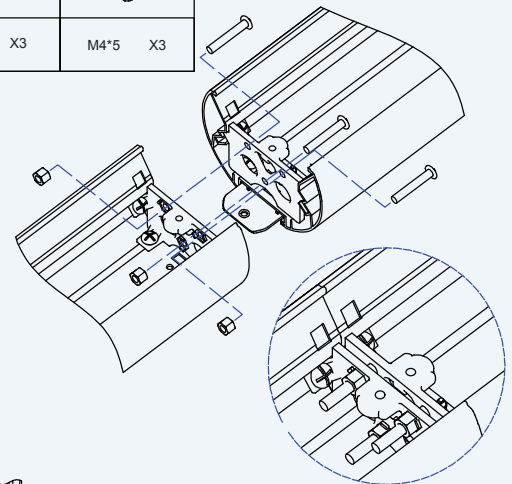
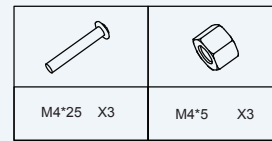
ROW-MOUNTING INSTRUCTIONS



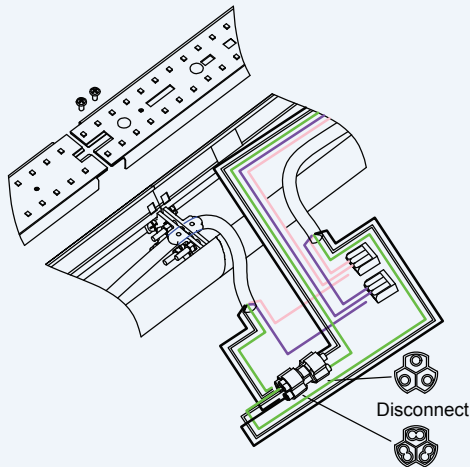
Step 1 : Remove the end cap.



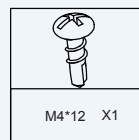
Step 2 : After attaching the connector to the back of one end of the light, flip it to the front.



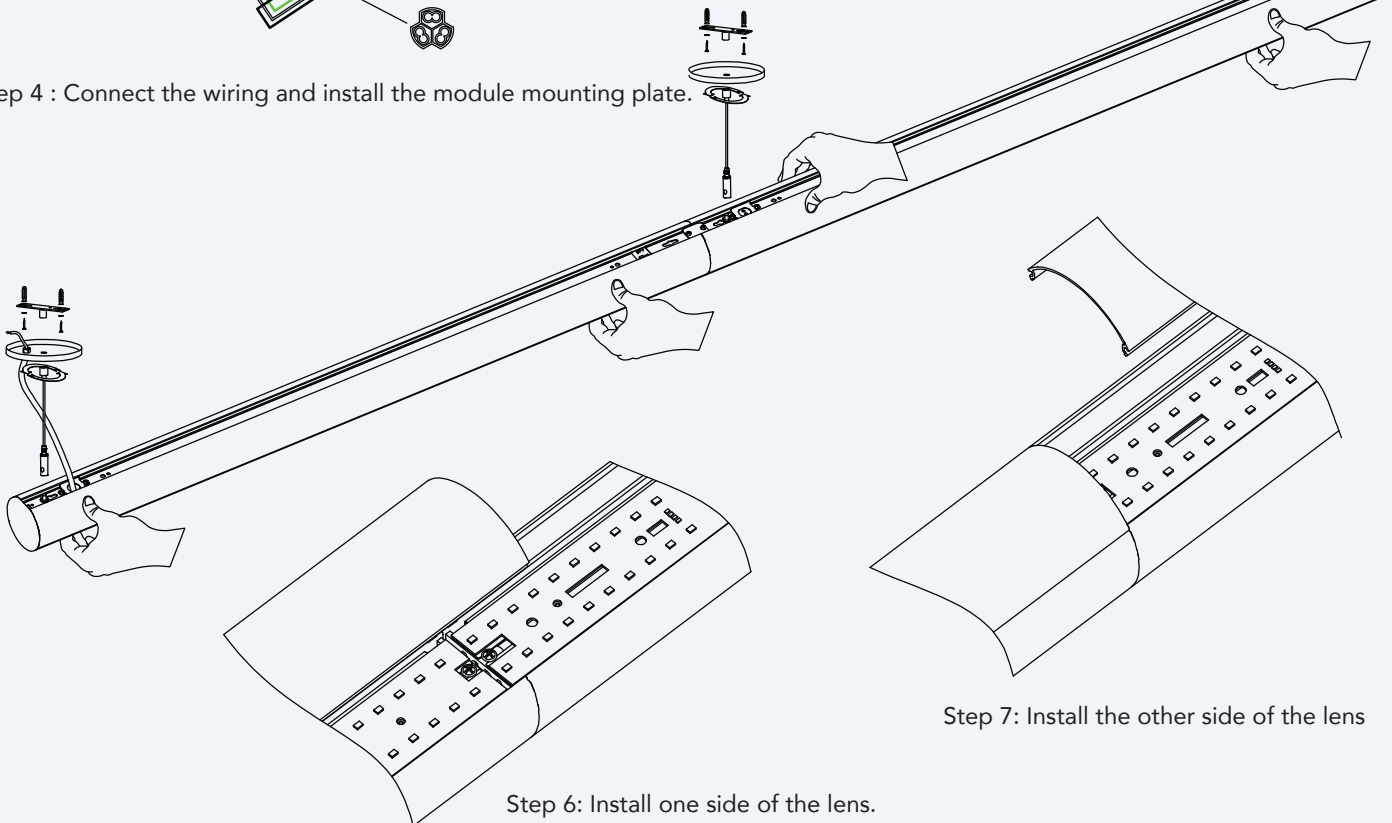
Step 3 : Install the connector screws



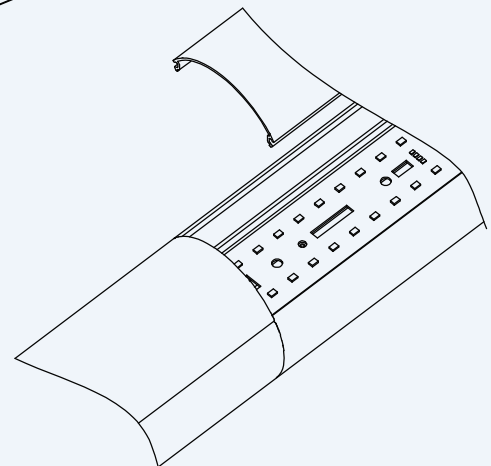
Step 4 : Connect the wiring and install the module mounting plate.



Step 5 : Install the connector screws on the back side.



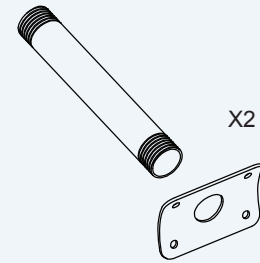
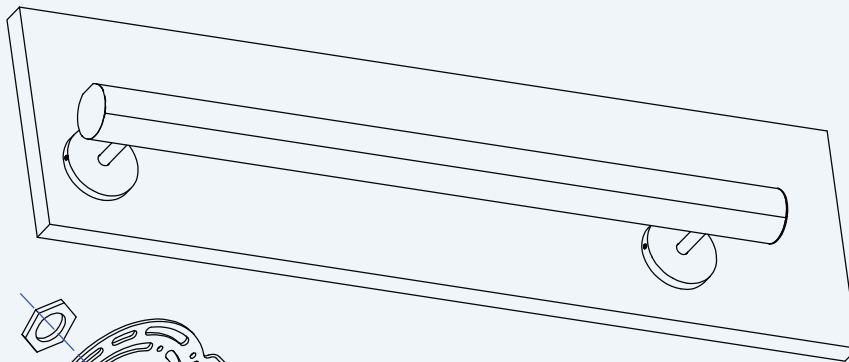
Step 6 : Install one side of the lens.



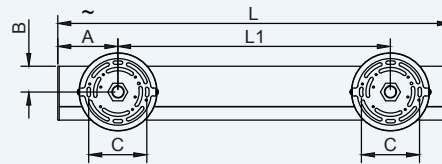
Step 7 : Install the other side of the lens

WALL MOUNT

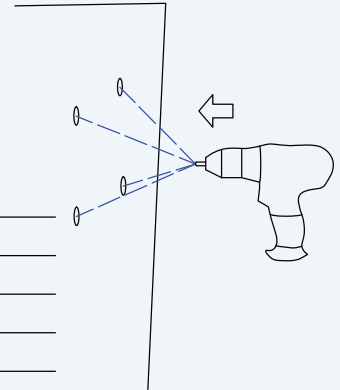
Step 1 : Install the wall mounting bracket.



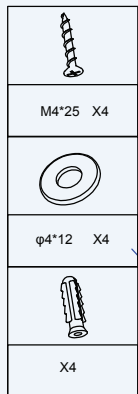
X2



	4ft	8ft
L	47.17" 1198mm	94.02" 2388mm
L1	39.92" 1,014mm	86.77" 2,204mm
A	3.62" 92mm	
B	1.56" 39.5mm	
C	3.50" 89mm	



Step 2 : Secure the rod with a nut onto the bracket." Step 3 : Drill holes in the ceiling.



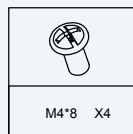
M4*25 X4

φ4*12 X4

X4

Step 4 : Install the bracket

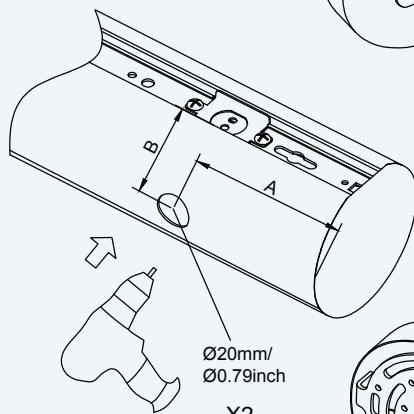
X2



M4*8 X4

Step 5 : Install the canopy

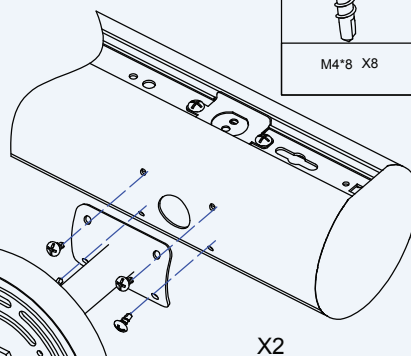
X2



Ø20mm/
Ø0.79inch

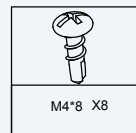
X2

Step 6

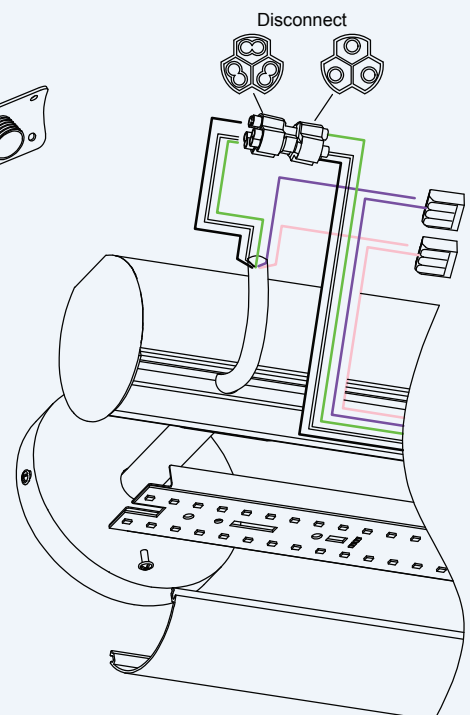


X2

Step 7 : Secure the fixture



M4*8 X8



Step 8 : Complete the wiring connections.