



AURA SERIES
**MODERN REGRESSED
POT LIGHT FIXTURES**



DEPTH
THAT DEFINES

Use depth to draw the eye naturally, shaping an experience where subtlety and precision are balanced in perfect harmony. Depth doesn't just add dimension — it adds distinction, defining what deserves attention without overwhelming the space.

NO GLARE, JUST FLAIR

Introducing the **AURA SERIES MODERN REGRESSED POT LIGHT** Collection: a refined offering of recessed lighting crafted for professional and architectural spaces.

Engineered with a distinctive, deeply set light source, the **AURA SERIES** minimizes glare and unwanted light spill, delivering precision beam control and elevated visual comfort. It is a thoughtful design approach that merges functionality with an understated elegance, transforming environments into beautifully illuminated, sophisticated spaces.



RETAIL STORES & SHOWROOMS

Use minimized glare and controlled light beams to highlight products without washing out colors or meaningful textures.



GALLERIES & MUSEUMS

Use the precise beam control of regress pot lights to illuminate artwork with minimal light spill.



HIGH END RESIDENTIAL

Provide a polished look and maintain a cozy feel, especially when combined with dimming capabilities.



HEALTHCARE FACILITIES

Make waiting rooms, hallways, and patient rooms softer by illuminating with non-invasive light.

ROUND REGRESSED GIMBALS

Order#	Model	Heads	Wattage	CCT	Lumens	CRI	Finish
R36122	RENO-LED-AURA-35-S12W-5CCT-BK	Single	12W	27/30/35/40/5000K	900 lm	90	Black
R36121	RENO-LED-AURA-35-S12W-5CCT-WH	Single	12W	27/30/35/40/5000K	900 lm	90	White
R36124	RENO-LED-AURA-4-S12W-5CCT-BK	Single	12W	27/30/35/40/5000K	900 lm	90	Black
R36123	RENO-LED-AURA-4-S12W-5CCT-WH	Single	12W	27/30/35/40/5000K	900 lm	90	White



R36122



R36121



R36124



R36123

SQUARE REGRESSED GIMBALS

Order#	Model	Heads	Wattage	CCT	Lumens	CRI	Finish
R36126	RENO-LED-AURA-35-S12W-5CCT-BK-SQ	Single	12W	27/30/35/40/5000K	900 lm	90	Black
R36125	RENO-LED-AURA-35-S12W-5CCT-WH-SQ	Single	12W	27/30/35/40/5000K	900 lm	90	White
R36128	RENO-LED-AURA-35-S24W-5CCT-BK-SQ	Dual	24W	27/30/35/40/5000K	1,800 lm	90	Black
R36127	RENO-LED-AURA-35-S24W-5CCT-WH-SQ	Dual	24W	27/30/35/40/5000K	1,800 lm	90	White
R36130	RENO-LED-AURA-35-S36W-5CCT-BK-SQ	3-Head	36W	27/30/35/40/5000K	2,700 lm	90	Black
R36129	RENO-LED-AURA-35-S36W-5CCT-WH-SQ	3-Head	36W	27/30/35/40/5000K	2,700 lm	90	White



R36126



R36125



R36128



R36127



R36130



R36129

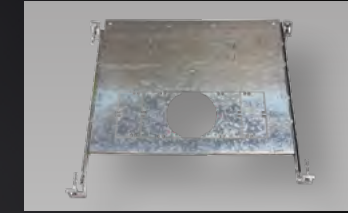
LINEAR RECESSED POT LIGHT

Order#	Model	Heads	Wattage	CCT	Lumens	CRI	Finish
R36140	RENO-LRSL-5CCT-8W-WH	6-head	8W	27/30/35/40/5000K	600 lm	90	White



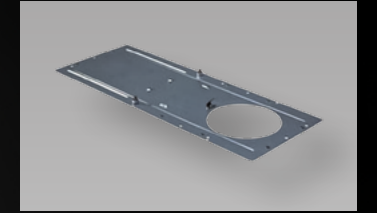
R36140

ACCESSORIES



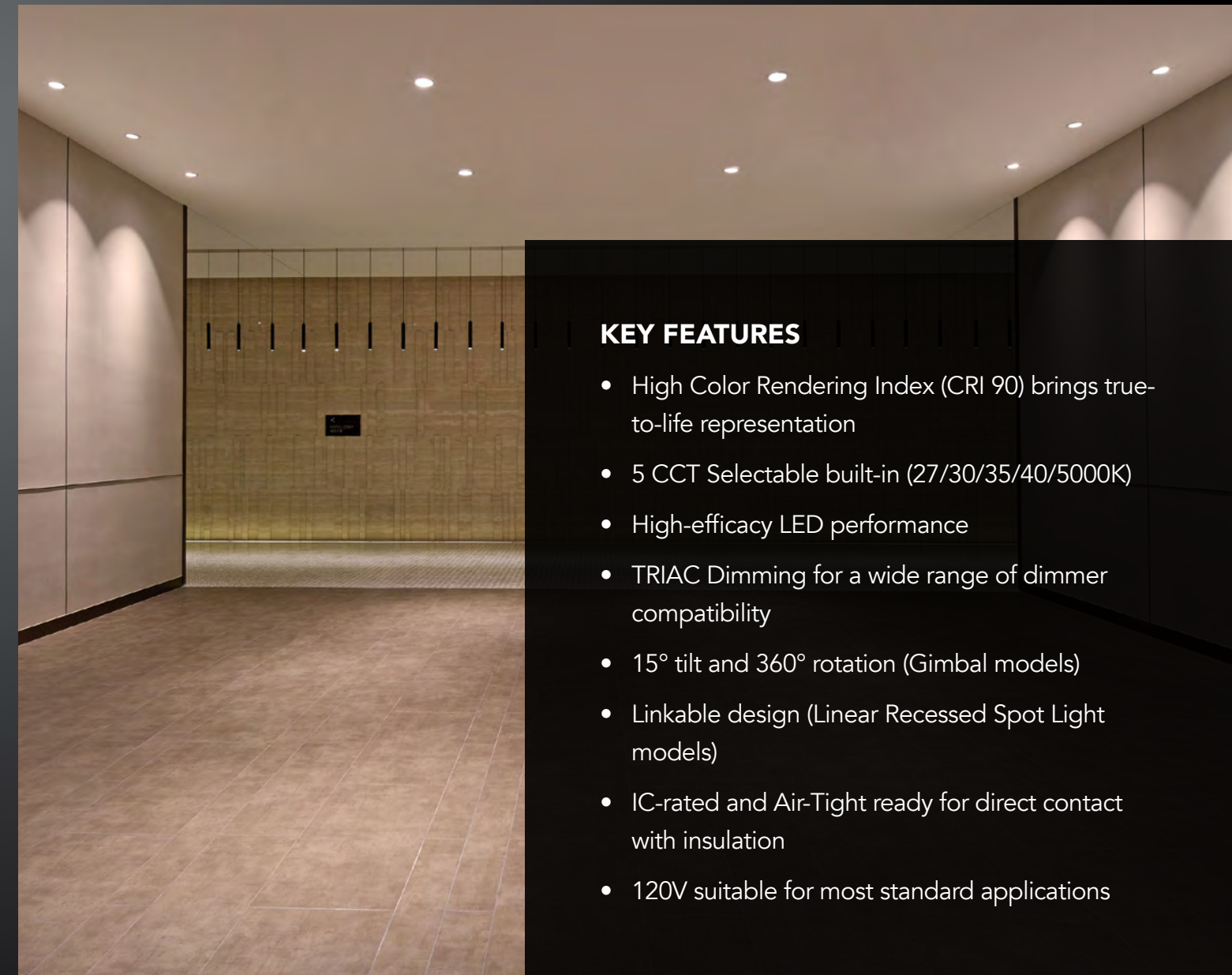
R39107

Model: RENO-MC-123
New Construction Plate
Compatible with 3.5" sizes
(single, dual, 3-head)



R39108

Model: RENO-MP4
Mounting Plate without Clip
Compatible with 4" Round
Gimbals



KEY FEATURES

- High Color Rendering Index (CRI 90) brings true-to-life representation
- 5 CCT Selectable built-in (27/30/35/40/5000K)
- High-efficacy LED performance
- TRIAC Dimming for a wide range of dimmer compatibility
- 15° tilt and 360° rotation (Gimbal models)
- Linkable design (Linear Recessed Spot Light models)
- IC-rated and Air-Tight ready for direct contact with insulation
- 120V suitable for most standard applications

AURA Series – Modern Regressed Pot Light Fixtures



905-604-4666
info@renolighting.com
www.renolighting.com



9133 Leslie St. #120
Richmond Hill, ON
L4B 4N1 Canada