

Date		Project	
Type		Part Number	

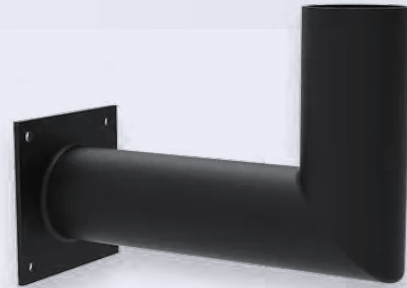


ALL-IN-ONE PERFORMANCE LIGHTING

TENON BRACKET

Right Angle Wall Mount

The Reno LSSM is designed to mount to a wall, providing a 9" long right angle. The outside diameter of the tenon is 2 3/8" working perfectly with the standard Slip-Fitter accessory.



RENO-LSSM



PRODUCT FEATURES

- 2 3/8" horizontal tenon
- Wall Mount
- Powder coated steel
- Matte Black Finish
- Custom colours available
- 1 year warranty

KEY SPECIFICATIONS

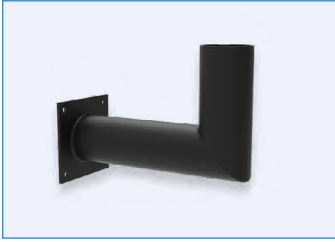
Tenon Diameter 2 3/8" (2.4mm)

Mounting Wall mount: LSSM - 9" (228.6mm)

Applications Commercial, Residential, Warehouse, Retail Facilities



ACCESSORY - WALL MOUNT



R59303
RENO-LSSM
Wall Mount, Right Angle
Tenon-9" Tenon

Order#	Model	Description
R59303	RENO-LSSM	Wall Mount, Right Angle Tenon - 9" Tenons

DIMENSIONS

RENO-LSSM

Width:	4" (101.6mm)
Height:	6.8" (172.7mm)
Length:	9.1" (231mm)
Diameter:	Ø2.4" (Ø61mm)
Weight:	10.7 lbs (271.8 kg)

