



CETO Series

NSF Sleek UFO Highbay



Date		Project	
Type		Part Number	

ARCHITECTURAL LUMINAIRES BY  **RENO**
LIGHTING

Engineered for tough environments, the CETO NSF Sleek UFO Highbay is built to endure extreme water pressure and high temperatures while featuring a seamless housing that simplifies cleaning and maintenance. Its efficient design maximizes performance, providing outstanding illumination for expansive areas. Designed specifically for challenging conditions, the CETO is perfectly suited for use in food production, industrial manufacturing, refrigerated storage, and laboratory settings.



Product Features

- DLC Premium certified for highbay applications
- NSF /ANSI 2 Certified: Compliant with food protection and sanitation requirements
- IP69K Rated: Ensures complete protection against dust and high-pressure, high-temperature water jets
- NEMA 4X Certified: Ensures the fixture is water-tight and can withstand extreme conditions
- Finish is salt-spray tested to 1,500 hours per ASTM B117
- Smooth aluminum housing protects the fixture from the accumulation of substances such as food debris and dust
- Designed for environments where equipment must endure rigorous cleaning and sanitation processes
- Sensor-Ready with 3.5mm jack design, compatible with Standalone and RENO Smart Bluetooth Sensors
- Compatible with the RENO IP65 Emergency LED Driver to provide backup power during a power outage
- Operating temp: -40°F to +113°F (-40°C to +45°C)
- Rated lifetime L70: >100,000 hours
- 10 Year Limited Warranty

Key Specifications

Voltage	120-347V
Wattage	Selectable: 150/200/240W
CCT	Selectable: 35/40/5000K
Efficacy	167 lm/W
Lumens	Up to 36,754 lm
CRI	>80
Power Factor	>0.9
THD	<20%
Beam Angle	110°
Dimming	0-10V Dimming
Surge Protection	6kVA
Certifications	NSF, IP66, IP69K, NEMA 4X
Mounting	Suspended
Applications	Food, Pharmaceutical, Automotive, Agricultural, Marinas, Cold Spaces





Specifications

Order#	Model	Wattage	Voltage	Lumens	Efficacy	CCT
R34230	RENO-SLEEK-HUB-DV-MW-MCCT	150W	120-347V	24,294 lm	162 lm/W	3500K
				25,070 lm	167 lm/W	4000K
				24,284 lm	161 lm/W	5000K
		200W	120-347V	31,042 lm	155 lm/W	3500K
				32,274 lm	161 lm/W	4000K
				30,810 lm	154 lm/W	5000K
		240W	120-347V	35,917 lm	149 lm/W	3500K
				36,754 lm	153 lm/W	4000K
				34,578 lm	144 lm/W	5000K

DLC Information

Order#	Model	Application	DLC Standard	DLC Premium
R34230	RENO-SLEEK-HUB-DV-MW-MCCT	High-Bay Luminaires for Commercial and Industrial Buildings	–	S-0ZMLFQ

Accessories - Emergency Driver



R83005
RENO-EM-40RM
Emergency LED Driver
(100-347V AC, 50-60Hz, 40W)

Order#	Model	Description
R83005	RENO-EM-40RM	External Mount Emergency Driver, 40W Output, ≥90 Minutes Operating Time

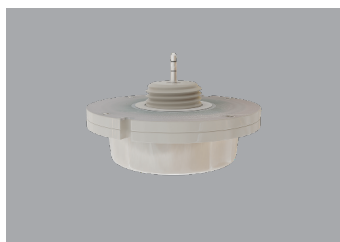




CETO Series | NSF Sleek UFO Highbay

ARCHITECTURAL LUMINAIRES BY  **RENO**
LIGHTING

Accessories - Standalone Sensor & Remotes



R71002
RENO-SENSOR-MW-H
Microwave Sensor



R74004
RENO-SENSOR-PIR3.5-PH15M
Long Detection Range PIR Sensor



R73002
RENO-REMOTE-H
Remote Control for Standalone
Sensors (With Screen)



R73005
RENO-REMOTE-H-ECO
Remote Control for Standalone
Sensors (Without Screen)

Order#	Model	Description
R74001	RENO-SENSOR-PIR-H	Bi-level Microwave Sensor
R74004	RENO-SENSOR-PIR3.5-PH15M	Long Detection Range PIR Sensor
R73002	RENO-REMOTE-H	Remote Control for Standalone Sensors (With Screen) Note: Only 1 needed per project
R73005	RENO-REMOTE-H-ECO	Remote Control for Standalone Sensors (Without Screen) Note: Only 1 needed per project

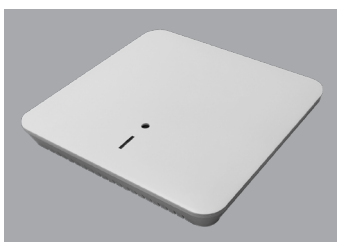
Accessories - Reno Smart NLC Sensors



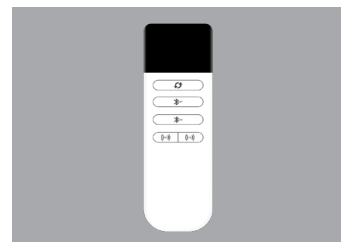
R75001
RENO-RS-JK-BPDN-12V
Bluetooth 3.5mm Jack PIR
Sensor



R75002
RENO-RS-JK-BMWM-12V
Bluetooth 3.5mm Jack
Microwave Sensor



R75201
RENO-RS-GW-BCNW
Bluetooth Ceiling mounted
gateway



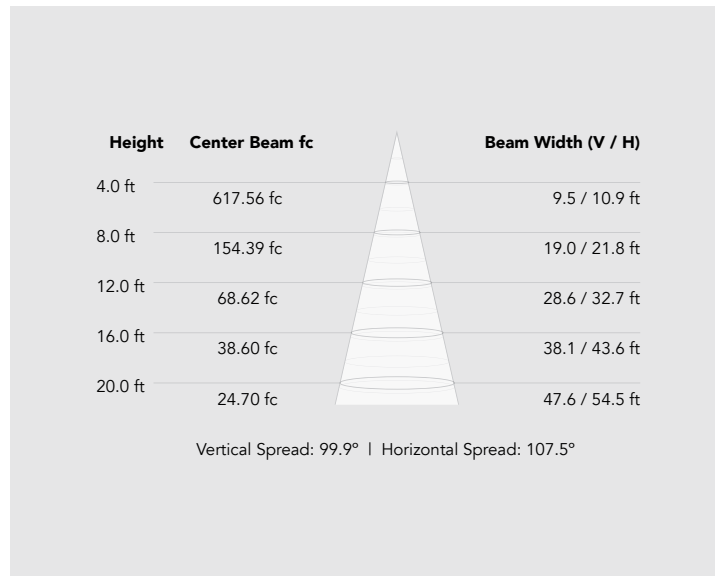
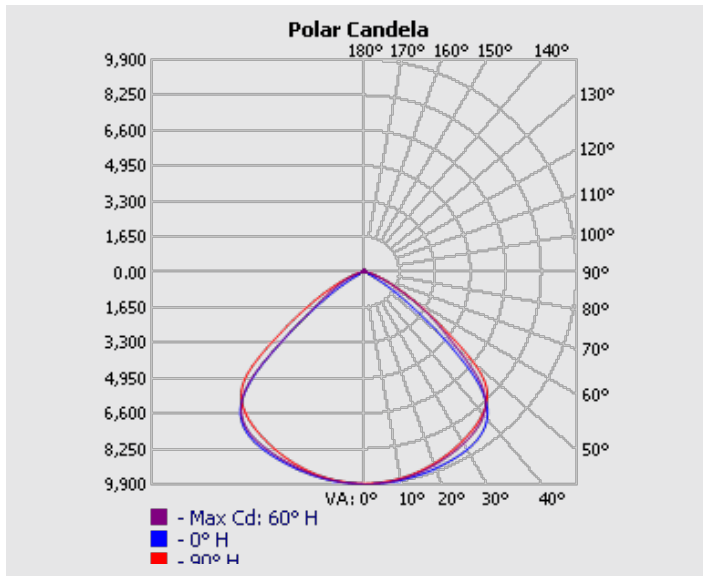
R75301
RENO-RS-GW-BCNW
Bluetooth Ceiling mounted
gateway

Order#	Model	Description
R75001	RENO-RS-JK-BPDN-12V	Bluetooth 3.5mm Jack PIR Sensor for RENO Smart NLC System
R75002	RENO-RS-JK-BMWM-12V	Bluetooth 3.5mm Jack Microwave Sensor for RENO Smart NLC System
R75201	RENO-RS-GW-BCNW	Bluetooth Ceiling mounted gateway for RENO Smart NLC System
R75301	RENO-RS-RC-BNNN	Bluetooth Reset remote controller (5-keys)

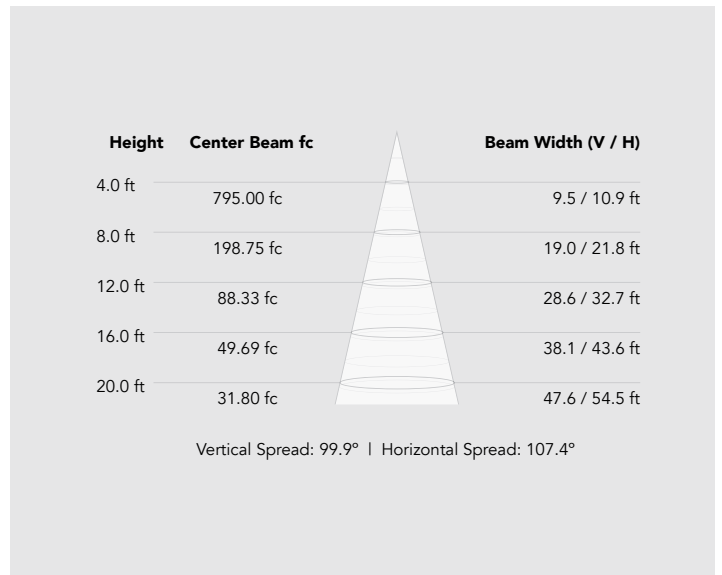
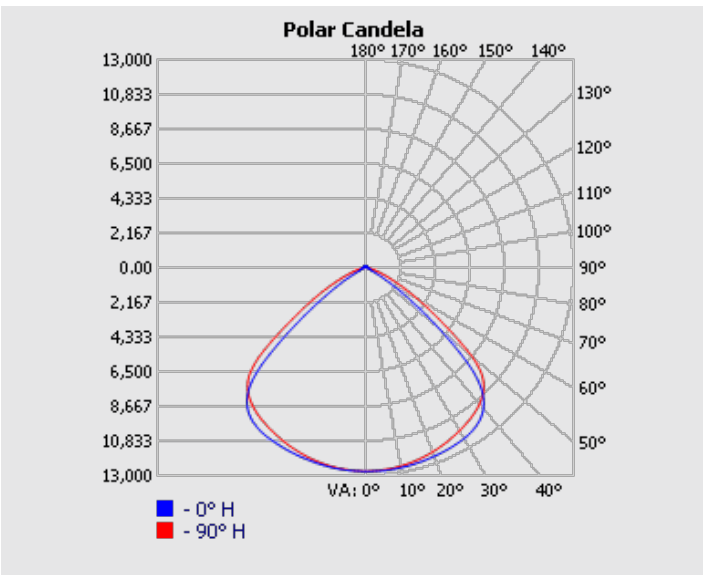
****All Reno Smart Sensors are programmed/commissioned using our Reno Smart App**



Photometrics - 150W/4000K



Photometrics - 200W/4000K

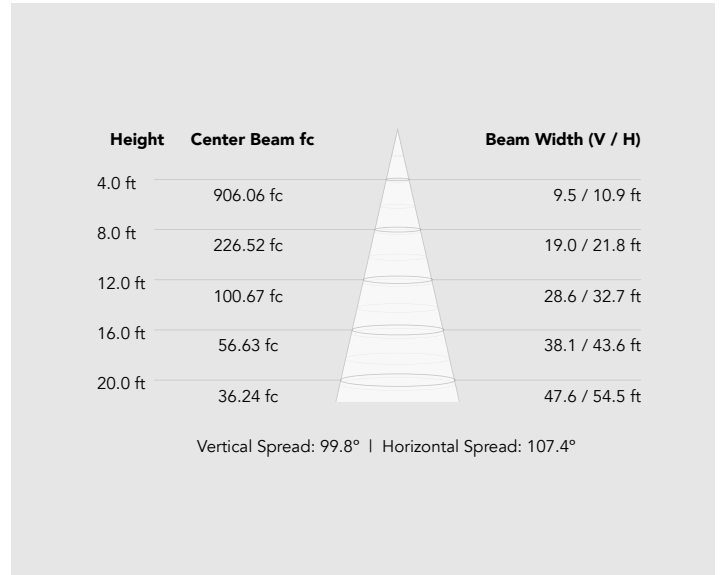
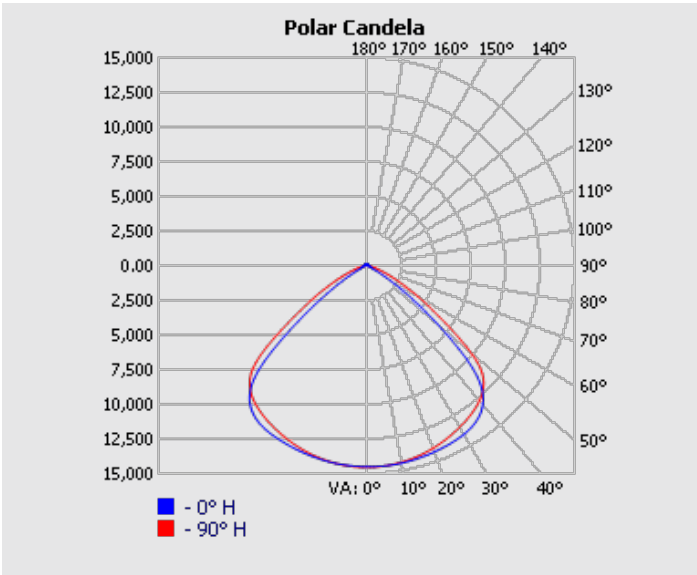




CETO Series | NSF Sleek UFO Highbay

ARCHITECTURAL LUMINAIRES BY  RENO[™] LIGHTING

Photometrics - 240W/4000K



Dimensions

