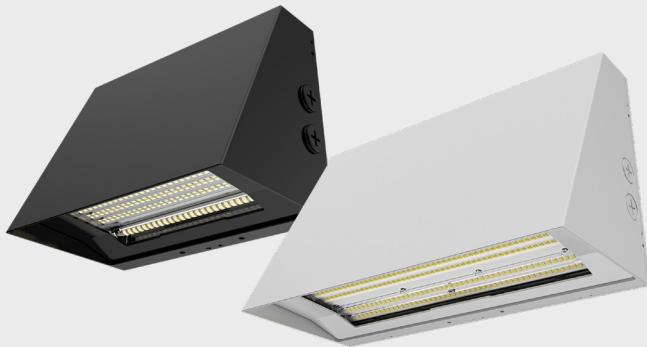


Date: _____ Project: _____

Type: _____ Part #: _____



Ops

Architectural Full Cut off Wall Pack

The OPS Slim Architectural Wall Pack combines sleek, low-profile design with versatile performance for a wide range of exterior applications.

Featuring BeamFlex™ Technology with field-adjustable Type II to Type IV distributions, selectable 3000K–5000K CCT, and field-adjustable wattage, OPS delivers the ideal balance of efficiency, flexibility, and architectural aesthetics. Available in three sizes.



Product Features

- DLC Pending
- Die-cast aluminum body
- Polycarbonate Lens
- Black and white finishes (custom finishes available)
- Available in 3 sizes
- Frosted prismatic polycarbonate lens designed to reduce glare
- BeamFlex™ Field-adjustable switch for distribution T2/T3/T4
- Field-adjustable wattages
- Built in photocell
- IP 65
- DarkSky (3000K)
- Operating temp: -40°C to +50°C (-40°F to +122°F)
- Rated Lifetime L70 >100,000 hrs
- 10 Year Limited Warranty

Specifications

Voltage	120-347V AC
Selectable Wattages	R1: 25/30/40W R2: 60/80/100W R3: 90/120/150W
Selectable CCT	3000K, 4000K, 5000K
THD	< 20%
Power Factor	> 0.9
CRI	80
Lumens	Up to 24,751 lm
Efficacy	Up to 169 lm/W
Beam Angle	T2, T3, T4
Dimming	0-10V
Mounting	Wall Mounting
Applications	Commercial Buildings, Retail Plazas, Walkways, Entryways, Parking Garages, Industrial Facilities, Multi-Residential, Hospitality

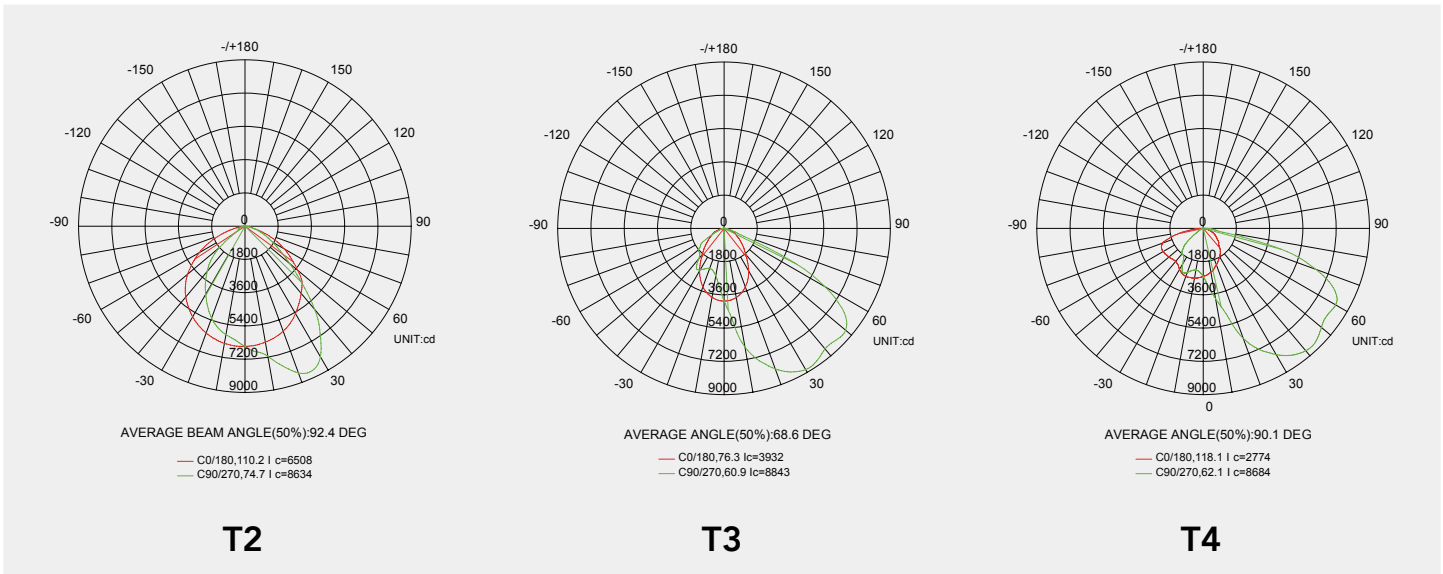
Specifications

Order#	Model#	Finish	Wattage	Lumens	Efficacy	CCT	Beam Angle
R51210	RENO-SFWP-DV-MCCT-ABA-G2-R1-BK	Black	25/30/40W	Up to 5653 lm	Up to 150 lm/W	35/40/5000K	T2/T3/T4
R51211	RENO-SFWP-DV-MCCT-ABA-G2-R1-WH	White	25/30/40W	Up to 5653 lm	Up to 150 lm/W	35/40/5000K	T2/T3/T4
R51212	RENO-SFWP-DV-MCCT-ABA-G2-R2-BK	Black	60/80/100W	Up to 13598 lm	Up to 150 lm/W	35/40/5000K	T2/T3/T4
R51213	RENO-SFWP-DV-MCCT-ABA-G2-R2-WH	White	60/80/100W	Up to 13598 lm	Up to 150 lm/W	35/40/5000K	T2/T3/T4
R51214	RENO-SFWP-DV-MCCT-ABA-G2-R3-BK	Black	90/12/150W	Up to 22977 lm	Up to 175 lm/W	35/40/5000K	T2/T3/T4
R51215	RENO-SFWP-DV-MCCT-ABA-G2-R3-WH	White	90/12/150W	Up to 22977 lm	Up to 175 lm/W	35/40/5000K	T2/T3/T4

DLC Certification

Order#	Model#	Application	DLC Standard	DLC Premium
R51210	RENO-SFWP-DV-MCCT-ABA-G2-R1-BK	Outdoor Full-Cutoff Wall Mounted Luminaires	-	Pending
R51211	RENO-SFWP-DV-MCCT-ABA-G2-R1-WH	Outdoor Full-Cutoff Wall Mounted Luminaires	-	Pending
R51212	RENO-SFWP-DV-MCCT-ABA-G2-R2-BK	Outdoor Full-Cutoff Wall Mounted Luminaires	-	Pending
R51213	RENO-SFWP-DV-MCCT-ABA-G2-R2-WH	Outdoor Full-Cutoff Wall Mounted Luminaires	-	Pending
R51214	RENO-SFWP-DV-MCCT-ABA-G2-R3-BK	Outdoor Full-Cutoff Wall Mounted Luminaires	-	Pending
R51215	RENO-SFWP-DV-MCCT-ABA-G2-R3-WH	Outdoor Full-Cutoff Wall Mounted Luminaires	-	Pending

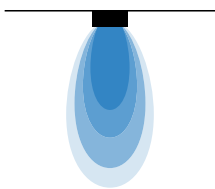
Distribution T2 | T3 | T4



BeamFlex™

RENO Optical Technology Platform

BeamFlex™ is Reno Lighting's proprietary optical technology platform providing field-selectable beam distribution integrated within the luminaire. Beam angles are adjustable on site during installation or commissioning, eliminating the need for factory-specified fixed optics or post-installation optic replacement.

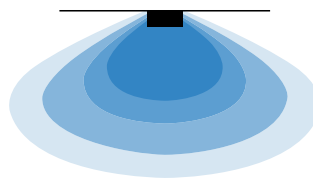


Type II (T2)

Light Distribution

Narrow Forward Distribution

Walkways, Side Paths, Alleys,
Building Perimeters

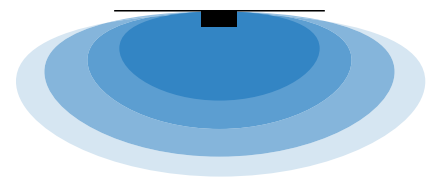


Type III (T3)

Light Distribution

Balanced Forward/Lateral Distribution

Parking areas, Building Exteriors, Wide Pathways,
Commercial Sites



Type IV (T4)

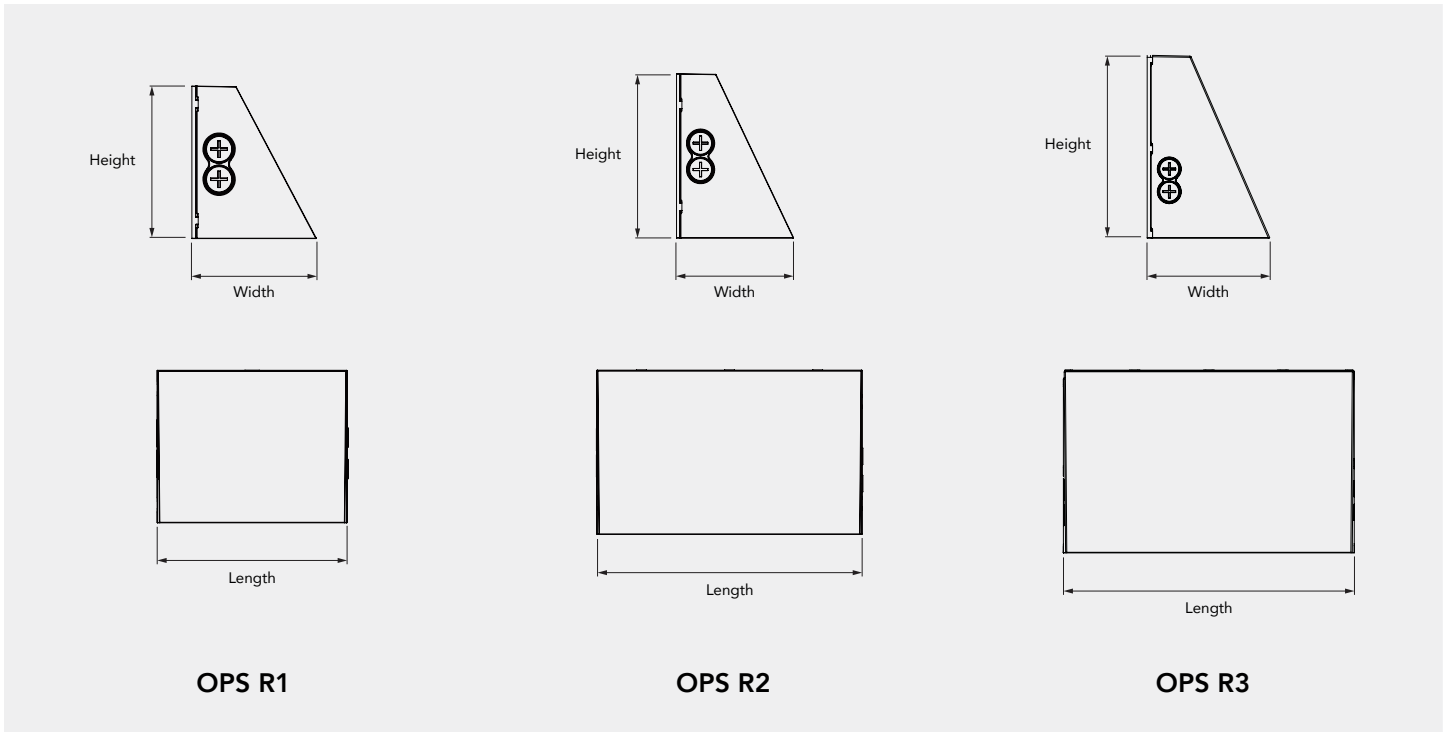
Light Distribution

Wide Forward Distribution

Large Perimeter Areas, Building Facades, Loading
and Docking Areas, Open Spaces

Dimensions

Ops R1 | R2 | R3



Model	Ops 9"	Ops 14"	Ops 17"
Length	8.3" 211 mm	13.34" 339 mm	16.92" 430 mm
Width	5.43" 138 mm	5.86" 149 mm	7.12" 181 mm
Height	6.69" 170 mm	8.26" 210 mm	10.62" 270 mm
Weight	1.89KG/4.17lbs	2.91kg/6.42lbs	4.81kg/10.6lbs

Accessories

Emergency LED Driver



All Weather Emergency LED Driver

R83010

RENO-EM-EX15

Order #	Model #	Description
R83010	RENO-EM-EX15	All Weather Emergency LED Driver 15W 100-347 90 Min Backup