



# Aerolux

Field-Adjustable Distribution Area Light

# Aerolux

## Refined by Design

Meet the Aerolux Series—a sculpted area light with on-site adjustable distribution, delivering precise, adaptable illumination across a range of applications.

Voltage  
**120-347V AC**

Wattages  
**R1: 90-150W**  
**R2: 180-300W**

Selectable CCT  
**3000K, 4000K, 5000K**

CRI  
**83**

Up to  
**55,463 lm**

Up to  
**193 lm/W**

Selectable Distribution  
**T2, T3, T4, T5**

Surge Protection  
**20kVA**

Life Hours L70  
**100,000 hrs**

Mounting Pole  
**Square or Round**

Wet Location Rated  
**IP65**

Dimensions <b>R1</b>	Dimensions <b>R2</b>
Length: <b>25.25"(667mm)</b>	Length: <b>34.21"(869mm)</b>
Width: <b>9.63"(245mm)</b>	Width: <b>12.8"(326mm)</b>
Body Height: <b>2.58"(65.4mm)</b>	Body Height: <b>3.15"(80mm)</b>
Full Height: <b>7.05"(231mm)</b>	Full Height: <b>9.65"(245mm)</b>

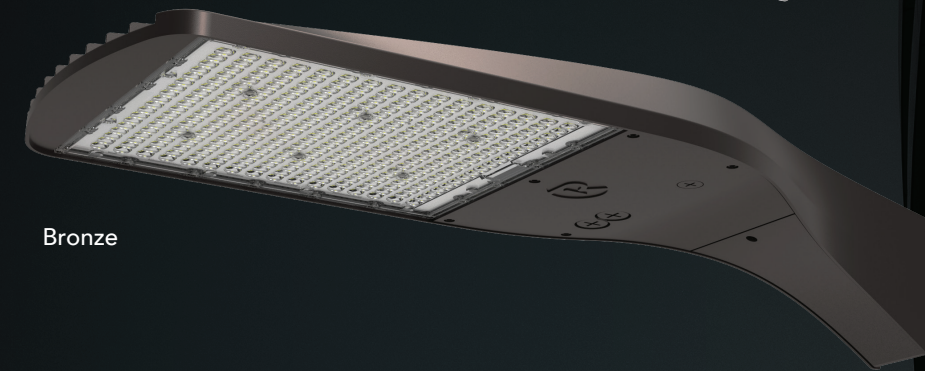


# Form Redefined

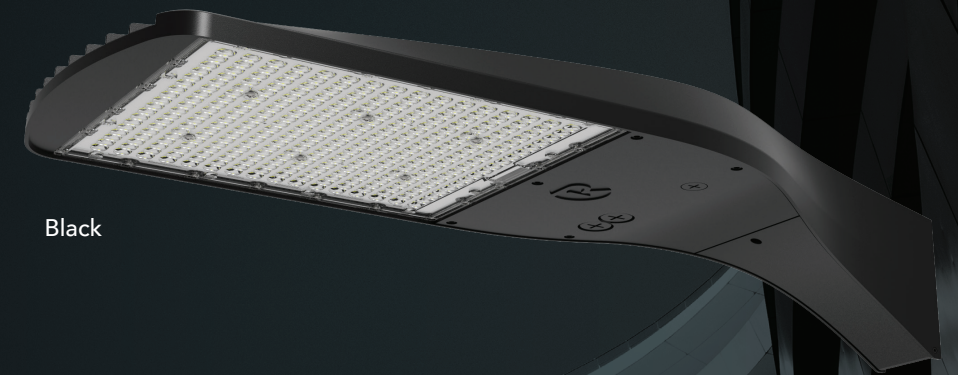
An elegant, streamlined curved profile formed in die-cast aluminum—engineered for durability and designed to deliver lasting performance with a refined, modern presence.



White



Bronze



Black

## Three Finishes One Elevated Aesthetic

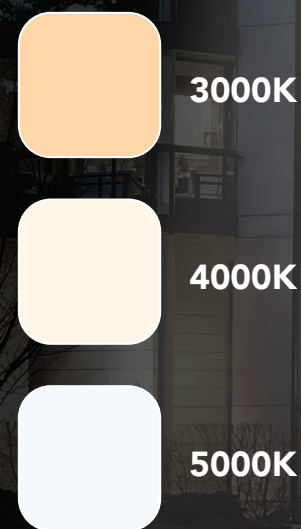
**White, Bronze, Black**

*Custom Finishes Available*

Field-Selectable

## Color Temperature

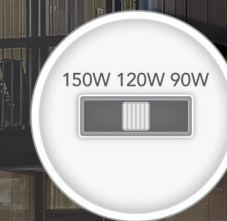
The Aerolux features selectable color temperatures (3000K, 4000K, 5000K), allowing installers to adjust light appearance on site to suit different environments and requirements—simplifying specification and installation.



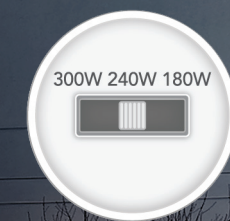
Field-Selectable

## Wattage

Selectable wattages enables on-site adjustment of output and efficiency to suit the application. A built-in switch allows performance to be fine-tuned without changing fixtures, supporting a range of mounting heights and coverage requirements.



**Aerolux R1**  
150W / 120W / 90W



**Aerolux R2**  
300W / 240W / 180W



# BeamFlex™

## Optical Technology Platform

BeamFlex™ is Reno Lighting's proprietary optical technology that enables on-site adjustment of light distribution.

Supporting selectable beam angles and Type II–V distributions, it allows fixtures to be optimized after installation—providing flexibility and ensuring optimal results for any space.

# A Smarter Optical Approach

BeamFlex™ eliminates this limitation by integrating adjustable optical control directly into the fixture. This simplifies product selection while ensuring the lighting can adapt to the space with confidence.

## Field-Adjustable Light Distribution

With selectable Type II, III, IV, or V distributions, Aerolux adapts on site to meet project requirements—reducing complexity while delivering precise, application-specific lighting.

TYPE III (T3)



TYPE IV (T4)

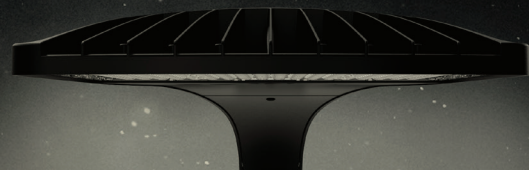


TYPE V (T5)



TYPE II (T2)





# DarkSky Compliant

Less Light Pollution

A DarkSky-compliant LED area light reduces uplight, glare, and light trespass while delivering illumination where it's needed.

This enhances visual comfort and safety, protects night skies, and supports local regulations—reflecting a commitment to responsible, efficient outdoor lighting.

*DarkSky-compliant at 3000K*



Round Pole Mount  
*(Adapter included)*

Square Pole Mount  
*(Standard)*



Aerolux | Area Light



Reno Lighting



Aerolux | Area Light



**CA Office**  
#120- 9133 Leslie St.  
Richmond Hill, ON  
L4B 4N1 Canada

**US Office**  
#6728 - 735 Dunwoody Place  
Atlanta, GA  
30350 United States