



Trusted in the Toughest Spaces

Reno Lighting High Bays — Built for Demanding Conditions
Certified NEMA4X, IP69K, ASTM B117, NSF.

Engineered for Demanding Environments



Triton
High Bay



Ceto
High Bay

Introducing the Triton and Ceto – high bay fixtures built to thrive in the toughest environments

Certified to NEMA4X, IP69K, ASTM B117, and NSF, these fixtures are purpose-built for spaces where durability, sanitation, and long-term resilience are critical.

Product Highlights

Smooth aluminum housing helps prevent the buildup of food debris and dust.

ASTM B117 Certified for Corrosion Resistance. Built to withstand moisture, chemicals, and harsh cleaning – tested under ASTM B117 salt spray standards for long-term durability.

IP69K Rated: Provides full protection against dust ingress and high-pressure, high-temperature water jets.

NEMA 4X Certified: Designed to be water-tight and resistant to harsh, corrosive environments.

NSF/ANSI 2 Certified: Meets standards for food safety and sanitation in commercial and industrial environments.

Emergency Ready: Compatible with the RENO All-Weather Emergency LED Driver for backup power during outages

Operating Temperature: -40°F to +122°F (-40°C to +50°C)

Rated Lifetime: L70 > 100,000 hours for long-lasting performance



ASTM Certified:

Certified for corrosion resistance under ASTM B117 conditions



NSF Certified:

Certified to meet strict sanitation and health safety standards



IP69K Rated:

Dust and high-pressure, high-temperature water jets protection



NEMA 4X Certified:

Certified to resist moisture, rust, and environmental exposure

Triton

Sleek Linear High Bay



Product Description

The TRITON Sleek Linear High Bay is built for tough environments, engineered to withstand high-pressure washdowns and extreme temperatures. Its smooth housing ensures easy maintenance and delivers efficient lighting in food processing, manufacturing, cold storage, and laboratory applications.

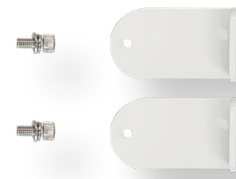
Specifications

120-347V	CRI 80+
100W, 150W 120W (selectable)	Beam Angle 90°
3500K, 4000K, 5000K (selectable)	0-10V Dimming
Up to 165 Lm/W	Operating Temp: -40°F to +122°F -40°C to +50°C
Up to 30,869 lms	Pendant and Surface Mounting (option)
L70@ 100,000 hours	12.8"(325mm) W x 2.29"(58.1mm) H x 21"(534mm) L

Order Guide

Order#	Model	Wattage	Voltage	Lumens	Efficacy	CCT
R34150	RENO-SLEEK-LHB-DV-MW-MCCT	100/150/200W	120-347V	Up to 30,869 lm	Up to 165 lm/W	35/40/5000K

Accessories



R39121

Order#	Model
R39121	RENO-SLEEK-LHB-WMK

Accessories - Standalone Sensor



R71002



R74004



R73002



R73005

Order#	Model	Description
R71002	RENO-SENSOR-MW-H	Bi-level Microwave Sensor
R74004	RENO-SENSOR-PIR3.5-PH15M	Long detection range PIR sensor
R73002	RENO-REMOTE-H	Remote control for standalone sensors with screen (note: only 1 needed per project)
R73005	RENO-REMOTE-H-ECO	Remote control for standalone sensors without screen (note: only 1 needed per project)

Accessories - Reno Smart NLC



R75001



R75002



R75201



R75301

Order#	Model	Description
R75001	RENO-RS-JK-BPDN-12V	Bluetooth 3.5 mm Jack PIR sensor for RENO Smart NLC System
R75002	RENO-RS-JK-BMWM-12V	Bluetooth 3.5 mm Jack Microwave sensor for RENO Smart NLC System
R75201	RENO-RS-GW-BCNW	Bluetooth ceiling mounted gateway for RENO Smart NLC System
R75301	RENO-RS-RC-BNNN	Bluetooth reset remote controller (5-keys)

**All Reno Smart Sensors are programmed/commissioned using our Reno Smart App

Ceto

Sleek UFO High Bay

Product Description

Designed for the most demanding spaces, the CETO Sleek UFO High Bay stands up to high-pressure cleaning and temperature extremes. Its seamless design allows for easy cleaning while providing powerful, energy-efficient illumination for food production, cold storage, manufacturing, and laboratory settings.

Specifications

120-347V	CRI 80+
150W, 200W, 240W (selectable)	Beam Angle 110°
3500K, 4000K, 5000K (selectable)	0-10V Dimming
Up to 167 Lm/W	Operating Temp: -40°F to +113°F -40°C to +45°C
Up to 36,754 lms	Ø 14.6" (370.8 mm) × 3.1" (79.7 mm) H (w/o hook)
L70@ 100,000 hours	

Order Guide

Order#	Model	Wattage	Voltage	Lumens	Efficacy	CCT
R34230	RENO-SLEEK-HUB-DV-MW-MCCT	150/200/240W	120-347V	Up to 36,754 lm	Up to 167 lm/W	35/40/5000K



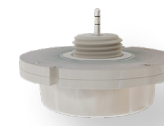
Accessories



R83005

Order#	Model	Description
R83005	RENO-EM-40RM	External mount emergency driver (40W output, ≥90 minutes operating time)

Accessories - Standalone Sensor & Remote



R71002



R74004



R73002



R73005

Order#	Model	Description
R71002	RENO-SENSOR-MW-H	Bi-level dimmable microwave sensor
R74004	RENO-SENSOR-PIR3.5-PH15M	Long detection range PIR sensor
R73002	RENO-REMOTE-H	Remote control for standalone sensors with screen (note: only 1 needed per project)
R73005	RENO-REMOTE-H-ECO	Remote control for standalone sensors without screen (note: only 1 needed per project)

Accessories - Reno Smart NLC



R75001



R75002



R75201



R75301

Order#	Model	Description
R75001	RENO-RS-JK-BPDN-12V	Bluetooth 3.5 mm Jack PIR sensor for RENO Smart NLC System
R75002	RENO-RS-JK-BMWM-12V	Bluetooth 3.5 mm Jack Microwave sensor for RENO Smart NLC System
R75201	RENO-RS-GW-BCNW	Bluetooth ceiling mounted gateway for RENO Smart NLC System
R75301	RENO-RS-RC-BNNN	Bluetooth reset remote controller (5-keys)

**All Reno Smart Sensors are programmed/commissioned using our Reno Smart App



Reno Smart

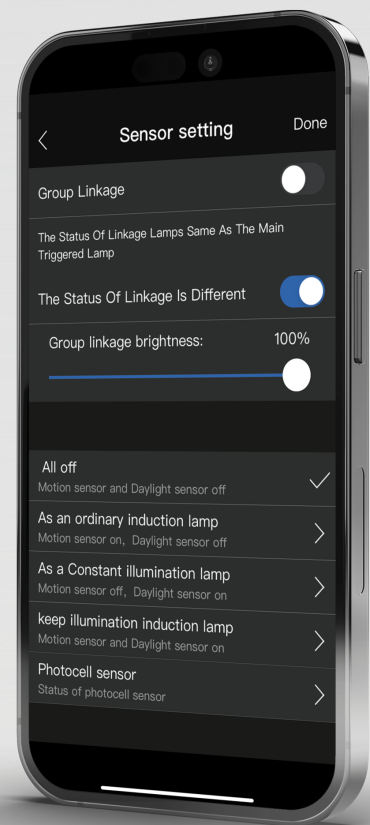
Sensor-ready with 3.5mm jack — works with Standalone or RENO Smart Bluetooth Sensors.

Create zones to manage multiple luminaires per area.

Group devices that share the same settings to quickly configure similar spaces.

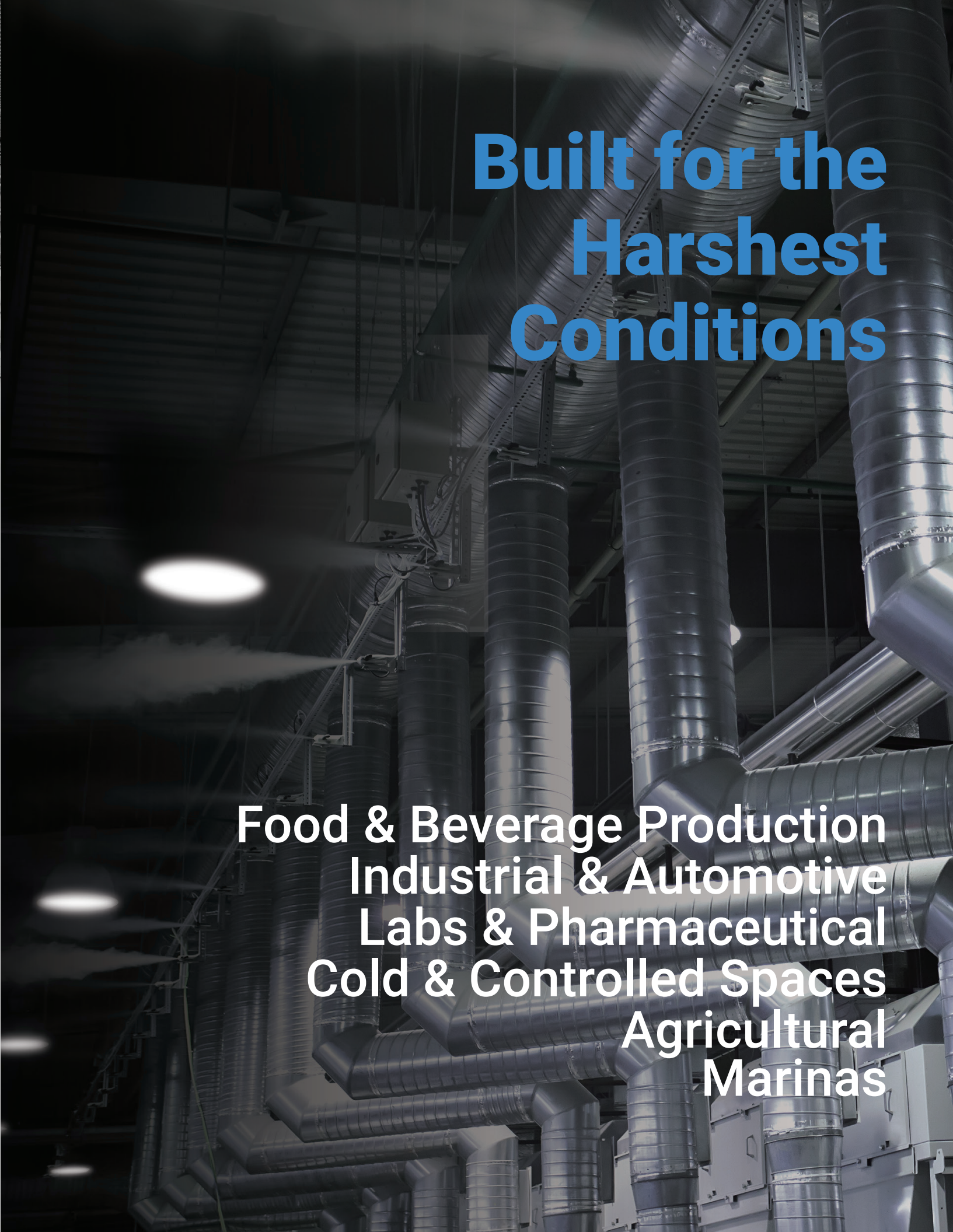
Preset light levels to make each space better suited for different activities.

Senses Occupancy to adjust light up and adjust light down when vacant.



**Built for the
Harshest
Conditions**

**Food & Beverage Production
Industrial & Automotive
Labs & Pharmaceutical
Cold & Controlled Spaces
Agricultural
Marinas**





Paint Application Facilities



Manufacturing Facilities



Food & Beverage Facilities



US Office
8735 Dunwoody Place #6728
Atlanta, GA
30350 United States



CA Office
9133 Leslie St. #120
Richmond Hill, ON
L4B 4N1 Canada