



HALO SERIES
**ARCHITECTURAL
POST TOP LUMINAIRES**

A BEACON TO SCULPT YOUR VISION

Frame a grand boulevard or accentuate the architecture of a modern plaza with tall beacons of light that shape and illuminate your vision for outdoor design.

URBAN A-SHAPE STYLE

Inspired by the classic silhouette of an A-shaped bulb, it combines timeless elegance with contemporary functionality. The rounded shape facilitates a uniform, 360-degree light distribution across all directions, while its familiar form blends classic charm with modern sophistication.

DOUBLE-ARM STYLE

A distinctive design, featuring two outwardly extending arms that support the light source. The double-arm configuration allows for a wider and more uniform spread of light and its symmetry creates a statement piece that blends seamlessly with modern landscapes.

AN ARCHITECTURAL STATEMENT, FOR BOTH DAY & NIGHT

The Halo Series redefines outdoor lighting, blending modern elegance with functional brilliance to meet the needs of specifiers seeking versatile area and walkway solutions. Featuring two distinctive styles—Double-Arm and Urban A-Shape—this collection elevates the visual appeal of any space, serving as both an architectural feature by day and a beacon of illumination by night.



URBAN PARKS & RECREATION AREAS

Offer safety and visibility for evening activities while minimizing light pollution.



PARKING AREAS

Ensure safety in parking areas such as those for retail outlets or apartment complexes.



PATHWAY LIGHTING

Illuminate walking paths, trails, and sidewalks in both residential and commercial areas.



INDUSTRIAL & COMMERCIAL CAMPUSES

Illuminate walkways and shared spaces while maintaining a modern, aesthetic look.



DOUBLE-ARM STYLE

URBAN A-SHAPE

KEY FEATURES

- Contemporary, architectural design
- Rugged aluminum alloy housing
- Dual Voltage 120-347V for a wide range of applications
- Multi Power and Multi CCT features
- Designed for -22°F to +122°F (-30°C to +50°C) operation
- IP66 Rated, IK09 (Urban A-Shape models)
- DarkSky Approved (Double-Arm models)
- For post top installations using a Ø 2" 3/8 tenon
- Available in Modern Black or White finish
- Tenon adaptors available (custom colors also available)



DOUBLE-ARM POST TOP

Order#	Model	Voltage	Wattage	Lumens	CCT	Finish
R55004	RENO-PT-DV-MW-MCCT-R1	120-347V	40/50/60W	up to 7,800 lm	30/40/5000K	Black
R55011	RENO-PT-DV-MW-MCCT-R1-WH	120-347V	40/50/60W	up to 7,800 lm	30/40/5000K	White
R55005	RENO-PT-DV-MW-MCCT-R2	120-347V	60/80/100W	up to 13,000 lm	30/40/5000K	Black
R55012	RENO-PT-DV-MW-MCCT-R2-WH	120-347V	60/80/100W	up to 13,000 lm	30/40/5000K	White
R55006	RENO-PT-DV-MW-MCCT-R3	120-347V	120/135/150W	up to 19,500 lm	30/40/5000K	Black

URBAN A-SHAPE POST TOP

Order#	Model	Voltage	Wattage	Lumens	CCT	Finish
R52021	RENO-PTU-DV-MW-MCCT-BK	120-347V	18/30/45/60W	up to 8,700 lm	30/40/5000K	Black
R52022	RENO-PTU-DV-MW-MCCT-WH	120-347V	18/30/45/60W	up to 8,700 lm	30/40/5000K	White

MOUNTING ACCESSORIES



R59304



R59305



R59306

Order#	Model	Description	Double-Arm	Urban A-Shape
R59304	RENO-TAR3	Tenon Adapter for 3 inch Round Poles	Compatible	Compatible
R59305	RENO-TAR4	Tenon Adapter for 4 inch Round Poles	Compatible	Compatible
R59306	RENO-TAR5	Tenon Adapter for 5 inch Round Poles	Compatible	Compatible

STANDALONE SENSORS



R72001



R71002



R72004

Order#	Model	Description	Double-Arm	Urban A-Shape
R72001	RENO-SENSOR-PC-S	Photocell Sensor, 3.5mm Jack	Compatible	-
R71002	RENO-SENSOR-MW-H	Dimming Microwave Sensor, 3.5mm Jack	Compatible	-
R72004	RENO-SENSOR-PC-TOP	Photocell Sensor, NEMA 3-Pin Twist Lock	-	Compatible

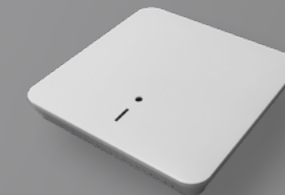
RENO SMART NLC SYSTEM ACCESSORIES



R75001



R75002



R75201



R75301

Order#	Model	Description	Double-Arm	Urban A-Shape
R75001	RENO-RS-JK-BPDN-12V	Bluetooth 3.5mm Jack PIR Sensor for RENO Smart NLC System	Compatible	-
R75002	RENO-RS-JK-BMWM-12V	Bluetooth 3.5mm Jack Microwave Sensor for RENO Smart NLC System	Compatible	-
R75201	RENO-RS-GW-BCNW	Ceiling Mounted Gateway for RENO Smart NLC System	Compatible	-
R75301	RENO-RS-RC-BNNN	5-Key Reset Remote	Compatible	-

HALO Series – Architectural Post Top Luminaires



905-604-4666
info@renolighting.com
www.renolighting.com



9133 Leslie St. #120
Richmond Hill, ON
L4B 4N1 Canada