



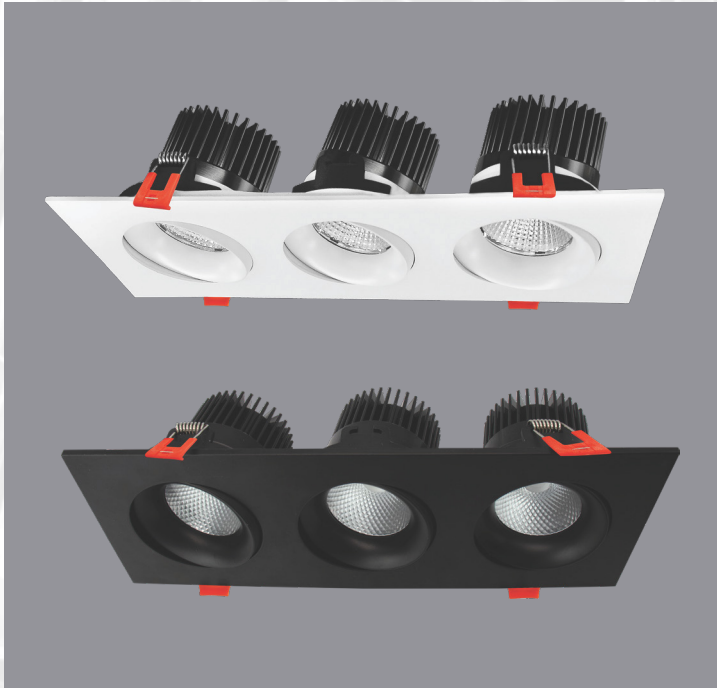
Date		Project	
Type		Part Number	

ARCHITECTURAL LUMINAIRES BY

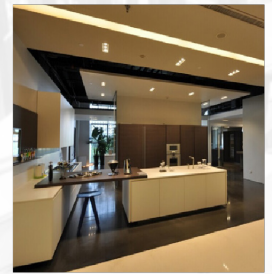


AURA Series

Square 3-Head Regressed Gimbal



RENO's Aura series 3-Light Regressed Gimbal offers enhanced control and versatility, making it an excellent choice for applications requiring precise light direction and adjustment. With 15-degree tilt and 360-degree rotation, this light ideal for spotlighting, architectural illumination, stage lighting, and various other applications requiring dynamic light positioning.



Product Features

- Durable aluminum body with adjustable gimbals
- I.C. rated for direct contact with insulation
- No housing required
- One to Three J-Box Included for easy install
- 15° Tilt, 360° Rotation
- Engineered to Maximized Heat Dissipation
- 120V Triac dimming, smooth range from 100% to 10%, and compatible with most dimmers, such as Lutron and Leviton
- Slide Swith Adjustable CCT
- Operating temp: -4°F to +113°F (20°C to +45°C)
- Rated lifetime L70: >50,000 hours

Key Specifications

Voltage	120V
Wattage	36W
Size	3.5"
Efficacy	75lm/W
CCT	27/30/35/40/50K
CRI	90
Lumens	2700
Beam Angle	40°
Dimming	120V TRIAC Dimming
Finish	Black or White





AURA Series | Square 3-Head Regressed Gimbal

ARCHITECTURAL LUMINAIRES BY



Specifications

Order#	Model	Wattage	Voltage	Lumens	CCT	Beam Angle	Size
R36129	RENO-LED-AURA-35-S36W-5CCT-WH-SQ	36W	120V	2700	27/30/35/40/50K	40°	3.5"
R36130	RENO-LED-AURA-35-S36W-5CCT-BK-SQ	36W	120V	2700	27/30/35/40/50K	40°	3.5"

Dimensions

