

|      |  |             |  |
|------|--|-------------|--|
| Date |  | Project     |  |
| Type |  | Part Number |  |



ALL-IN-ONE PERFORMANCE LIGHTING

# BRILLIANCE Series

## Magnetic Trim Slim Potlight

The Magnetic Trim Slim Potlight is a unique retrofit application that allows users to install into existing 4" octagon junction boxes or 4" recessed cans. It offers a sleek, versatile design with magnetic trim covers (black or brushed nickel) that can be easily interchanged to achieve the perfect look for any space.



## PRODUCT FEATURES

- JA8 compliant
- Energystar Certified
- White trim included
- Interchangeable magnetic trims available: black or brushed nickel
- For use with a standard octagon junction box or 4" recessed housings (requires [R39112] Butterfly Clips and [R39113] E26 Base)
- IC-Rated and Air-Tight ready and may be in direct contact with insulation
- Flicker-free 120V forward-phase triac dimming down to 10%
- Operating temperature: -4°F to +104°F (-20°C to +40°C)
- Rated Lifespan: L70 ~100,000 hrs
- 5 year warranty

## KEY SPECIFICATIONS

|                     |  |
|---------------------|--|
| <b>Voltage</b>      | 120V   |
| <b>Wattage</b>      | 8W   |
| <b>Size</b>         | 4"   |
| <b>Power Factor</b> | >0.9   |
| <b>CCT</b>          | 27/30/35/40/5000K                            |
| <b>CRI</b>          | >90  |
| <b>Lumens</b>       | Up to 754 lm                                 |
| <b>Beam Angle</b>   | 120°   |
| <b>Dimming</b>      | 120V forward-phase TRIAC Dimming             |
| <b>Mounting</b>     | Standard Junction box or 4" Recessed Housing |
| <b>Applications</b> | Commercial, Residential, Retail Facilities   |

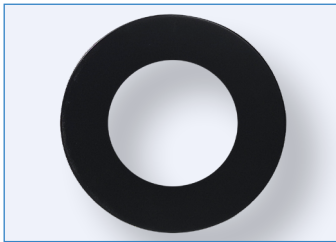


EMERGENCY  
BACKUP READY

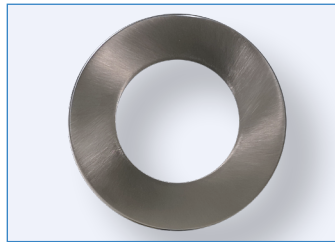
## SPECIFICATIONS – 12W

| Order# | Model                  | Wattage | Voltage | Lumens | Efficacy | CCT   | Finish |
|--------|------------------------|---------|---------|--------|----------|-------|--------|
| R36019 | RENO-4-S8W-5CCT-MRL-WH | 8W      | 120V    | 663 lm | 83 lm/W  | 2700K | White  |
|        |                        |         |         | 705 lm | 88 lm/W  | 3000K |        |
|        |                        |         |         | 744 lm | 93 lm/W  | 3500K |        |
|        |                        |         |         | 754 lm | 94 lm/W  | 4000K |        |
|        |                        |         |         | 717 lm | 90 lm/W  | 5000K |        |

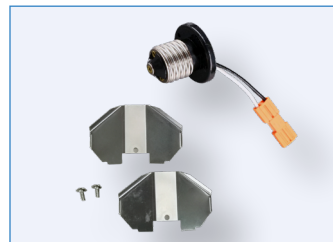
## ACCESSORIES – MOUNTING



R39110  
RENO-4-MRL-TRIM-BK  
Black Magnetic Trim



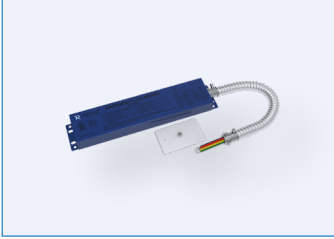
R39111  
RENO-4-MRL-TRIM-BN  
Brushed Nickel Magnetic Trim



R39112  
RENO-4-ADAPTOR-CLIP  
Downlight Housing Retrofit Kit

| Order# | Model               | Description  |
|--------|---------------------|--|
| R39110 | RENO-4-MRL-TRIM-BK  | Black Magnetic Trim  |
| R39111 | RENO-4-MRL-TRIM-BN  | Brushed Nickel Magnetic Trim   |
| R39112 | RENO-4-ADAPTOR-CLIP | Downlight Housing Retrofit Kit (E26 Base adaptor & mounting accessories) |

## ACCESSORIES – EMERGENCY LED DRIVERS



R83000  
 RENO-EM-H08  
 Emergency LED Driver  
 (100-347V AC, 50-60Hz, 12W)

| Order# | Model       | Description                                      |
|--------|-------------|--|
| R83000 | RENO-EM-H08 | Emergency LED Driver (100-347V AC, 50-60Hz, 12W) |

## DIMENSIONS

